

Remote Desktop access via Faculty Terminal Server Using Internet Explorer (versions 5.x-7.x)

Start your Internet Explorer browser and direct it to the faculty home page. Click on the link 'Remote Access', located on the top right of the navigation panel (note: most department home pages also have the same 'Remote Access' link as well). If you are not using Internet Explorer, you will be required to use a Remote Desktop client (RDP client), please refer to the bottom of the 'Remote Access' page for those instructions.

The screenshot shows a Microsoft Internet Explorer browser window displaying the website for the Faculty of Agriculture, Forestry, and Home Economics at the University of Alberta. The address bar shows <http://www.afhe.ualberta.ca/>. The website features a navigation menu with links for Home, Student Information, People, Research, Contact Us, Remote Access, Search, and Site Map. The main content area is divided into sections: Home Menu, About Us, and Faculty News. The About Us section includes a logo and text describing the faculty's focus on natural, biological, and human resources. The Faculty News section features two articles: 'Renewable Resources Chair Earns International Award' and 'Trio of fledglings born at U of A falcon nest'. The bottom of the browser window shows the Windows taskbar with the Start button, several application icons, and the system tray displaying the time as 08:20.

Faculty of Agriculture, Forestry, and Home Economics - Microsoft Internet Explorer

File Edit View Favorites Tools Help

Back Forward Stop Home Search Favorites Refresh Print Mail

Address <http://www.afhe.ualberta.ca/> Go Links »

UNIVERSITY OF ALBERTA **more than you expect** FACULTY OF AGRICULTURE, FORESTRY, & HOME ECONOMICS

Home | Student Information | People | Research | Contact Us | Remote Access | Search | Site Map »

Home Menu

- About Faculty
 - Dean's Message
 - Dean's Drop-In
 - Contact Us
- Student Information
 - Undergrad Programs
 - Graduate Programs
 - Internship Program
 - Courses
- People
 - Directory
 - Employment Info
- Research
 - Areas of Focus
 - Facilities
- Faculty of AFHE
 - Departments
 - On-Campus Offices
 - Off-Campus Offices
- What's Happening
 - News & Events
 - Newsletters
 - Alumni Information
 - Bar None Fund
- Hosted Sites
 - Bar None Fund
 - FAPWC
 - IFASA

About Us

Faculty of Agriculture, Forestry, and Home Economics
"More than you expect"

Welcome to an extraordinary Faculty with strong traditions and an eye to the future.

Programs within the Faculty focus on three major resources: the **natural resource** including soil and water; the **biological resource**, including animals, crops and forests; and the **human resource**, including individuals and communities. Our strength comes from our diversity and our depth in both the natural and social sciences. We are different from any other faculty in the country and clearly **"More than you expect"**.

Faculty News

Renewable Resources Chair Earns International Award
Growing up on a forest's edge in western Pennsylvania, University of Alberta entomologist Dr. John Spence spent his boyhood amongst all sorts of critters. "All around me there were these creatures, and hundreds and hundreds of different kinds, and they were all active and doing different things. I just became interested in insects at a very young ...[Full story](#).

Trio of fledglings born at U of A falcon nest
July 4, 2005 - The stork has paid a visit to the University of Alberta's falcon family, delivering three bundles of joy to the nest atop the Clinical Sciences Building. Since the clutch hatched on June 24, the falcon pair has been parenting three fledglings. And the family's doing very well, according to former U of A Renewable Resources lecturer ...[Full story](#).

[more news | archives](#)

No current events. Please see [archives](#)

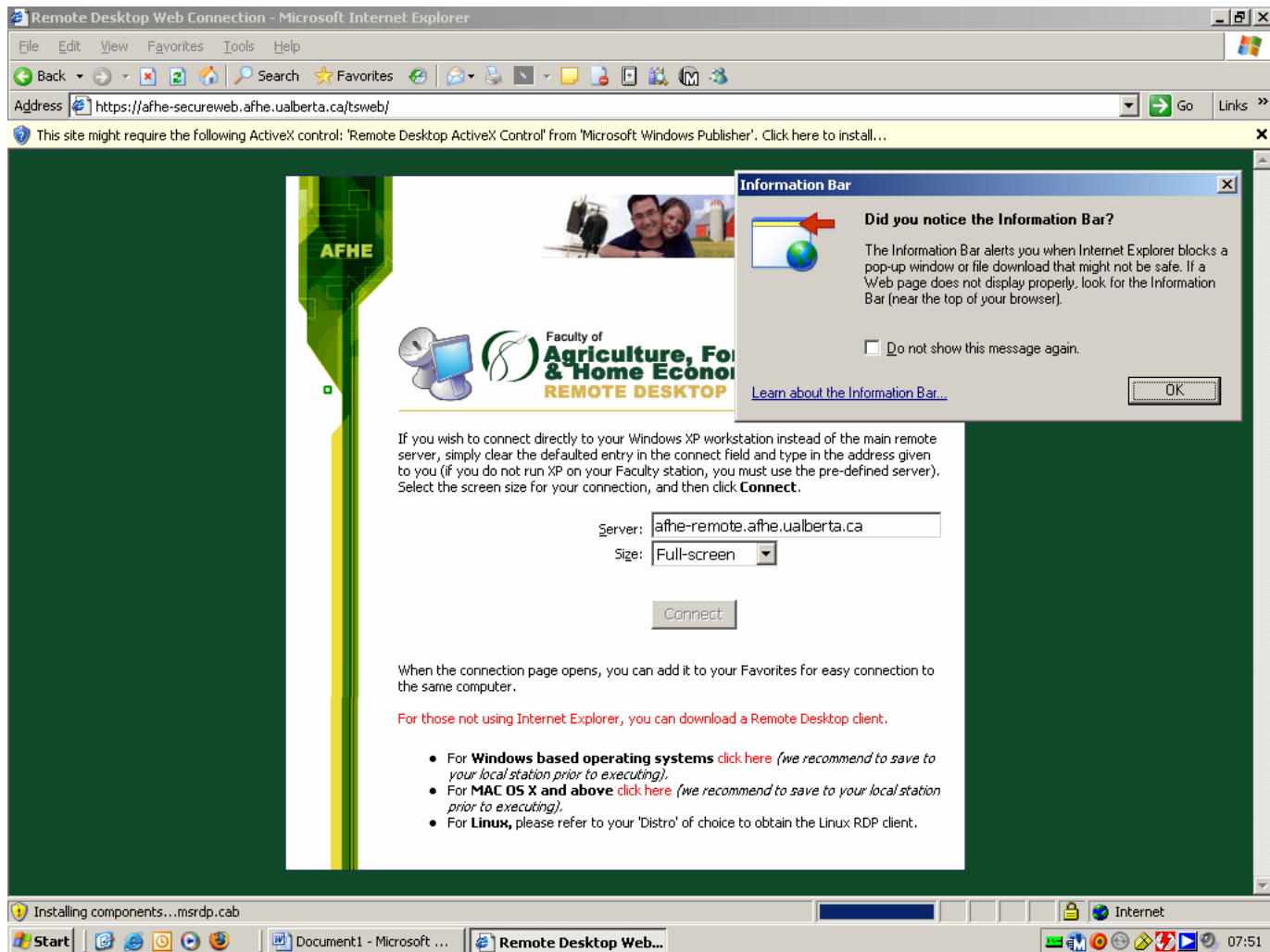
<https://afhe-secureweb.afhe.ualberta.ca/> Internet

Start Document1 - Microsoft ... Faculty of Agriculture... Inbox - Microsoft Outlook 08:20

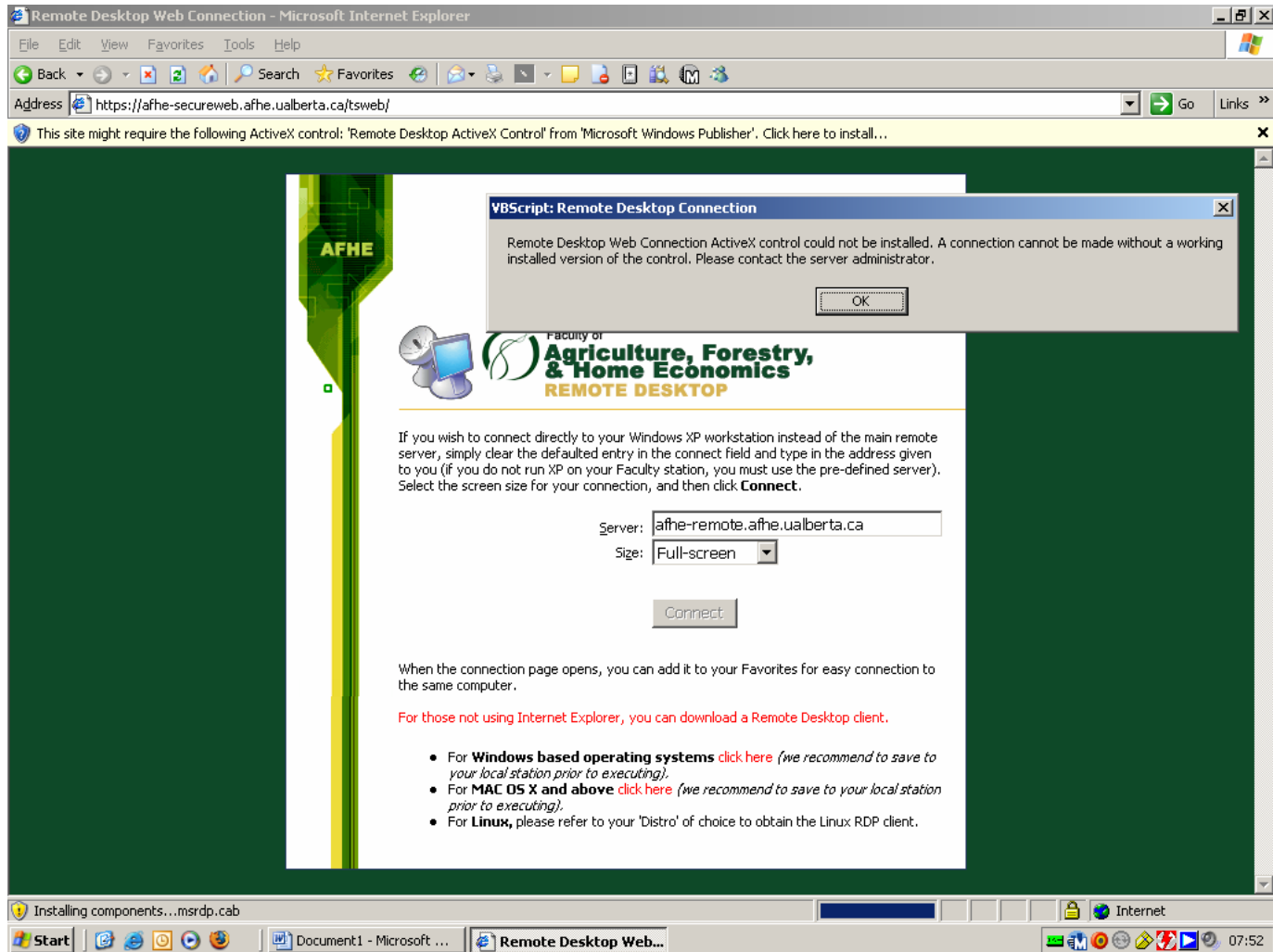
Once you have arrived on the 'Remote Access' page, click on the link 'Remote Desktop Access' (note: you may wish to book mark this page for future direct access).

The screenshot shows a Microsoft Internet Explorer browser window displaying the 'Remote Access' page for the Faculty of Agriculture, Forestry, & Home Economics (AFHE). The browser's address bar shows the URL: <https://afhe-secureweb.afhe.ualberta.ca/>. The page features a green and white design with a navigation menu on the left and a main content area. The main content area includes a header with the AFHE logo and the text 'Faculty of Agriculture, Forestry, & Home Economics REMOTE ACCESS'. Below the header, there is a red warning message: 'We Recommend disabling popup blockers for all AFHE Faculty web resources. When you are finished your session, please close all browser windows to ensure a successful log off.' The main content area contains several buttons for different services: 'Outlook Mail & Calendar Access', 'Remote Desktop Access', 'Remote (Files Only) Access', 'Cell & PDA Devices Access & Guide', 'Faculty Password Management', 'Campus CCID Password Management', and 'IT Support Contacts'. There is also a 'Downloads' section with a link for 'Faculty - SSL Certificate'. At the bottom of the page, there is a section for 'Remote Configuration Guides for Email Clients:' with links for 'Windows Xp & Outlook 2003', 'IMAP Client (Thunderbird)', 'Open Source Ximian (Novell)', and 'MAC Entourage 2004'. The browser's taskbar at the bottom shows the Start button, several open applications including 'Document1 - Microsoft ...', 'Remote Access - Micr...', and 'Inbox - Microsoft Outlook', and the system tray with the time 08:23.

The web enabled remote access page requires the use of an 'ActiveX control', if you are using any 'Pop up blocker' mechanism, you will be alerted to the following download alert, simply click 'Ok'.



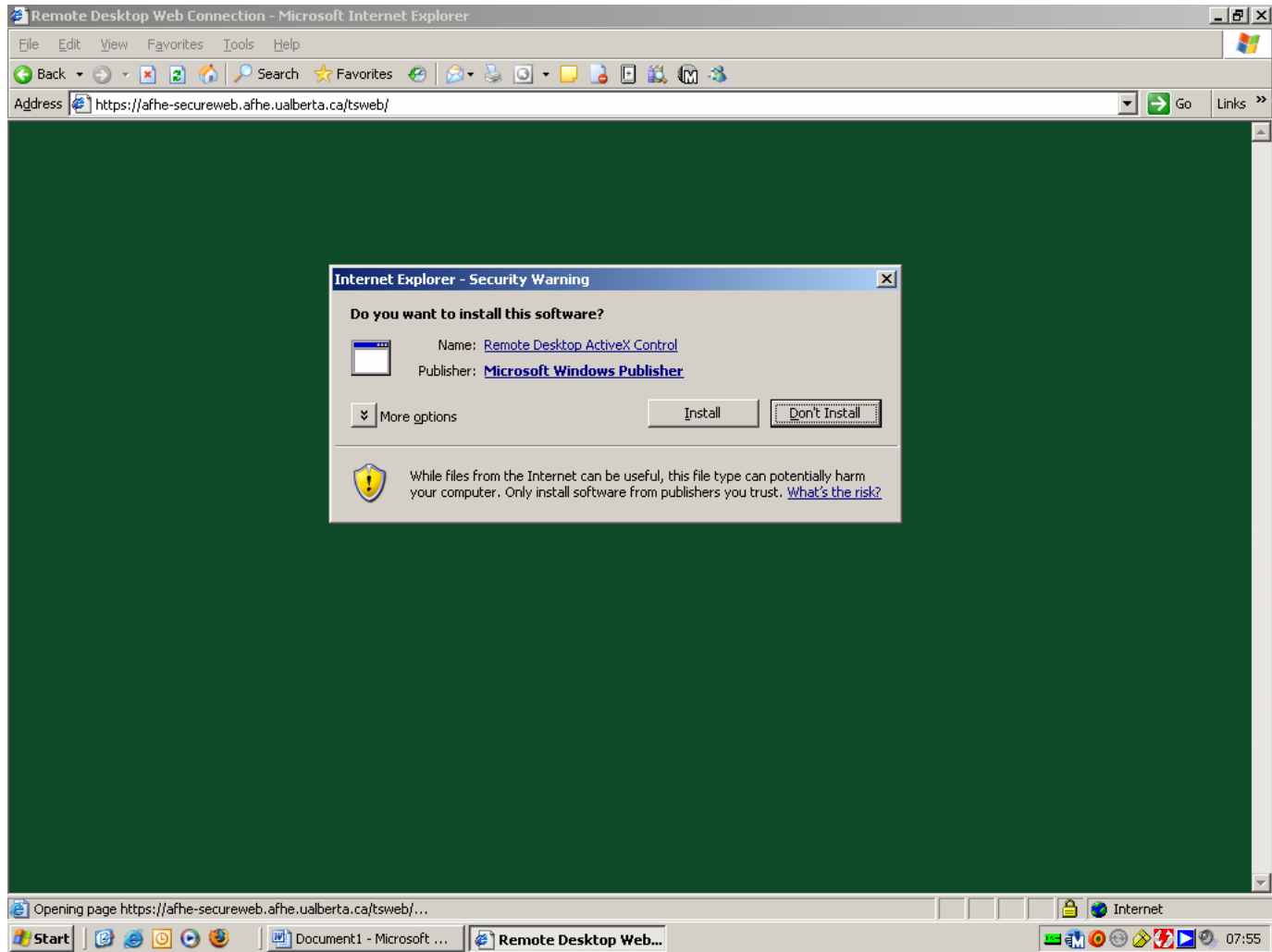
If you receive this second alert, this is normal due to the web browser's 'Pop up blocker', simply click 'Ok'.



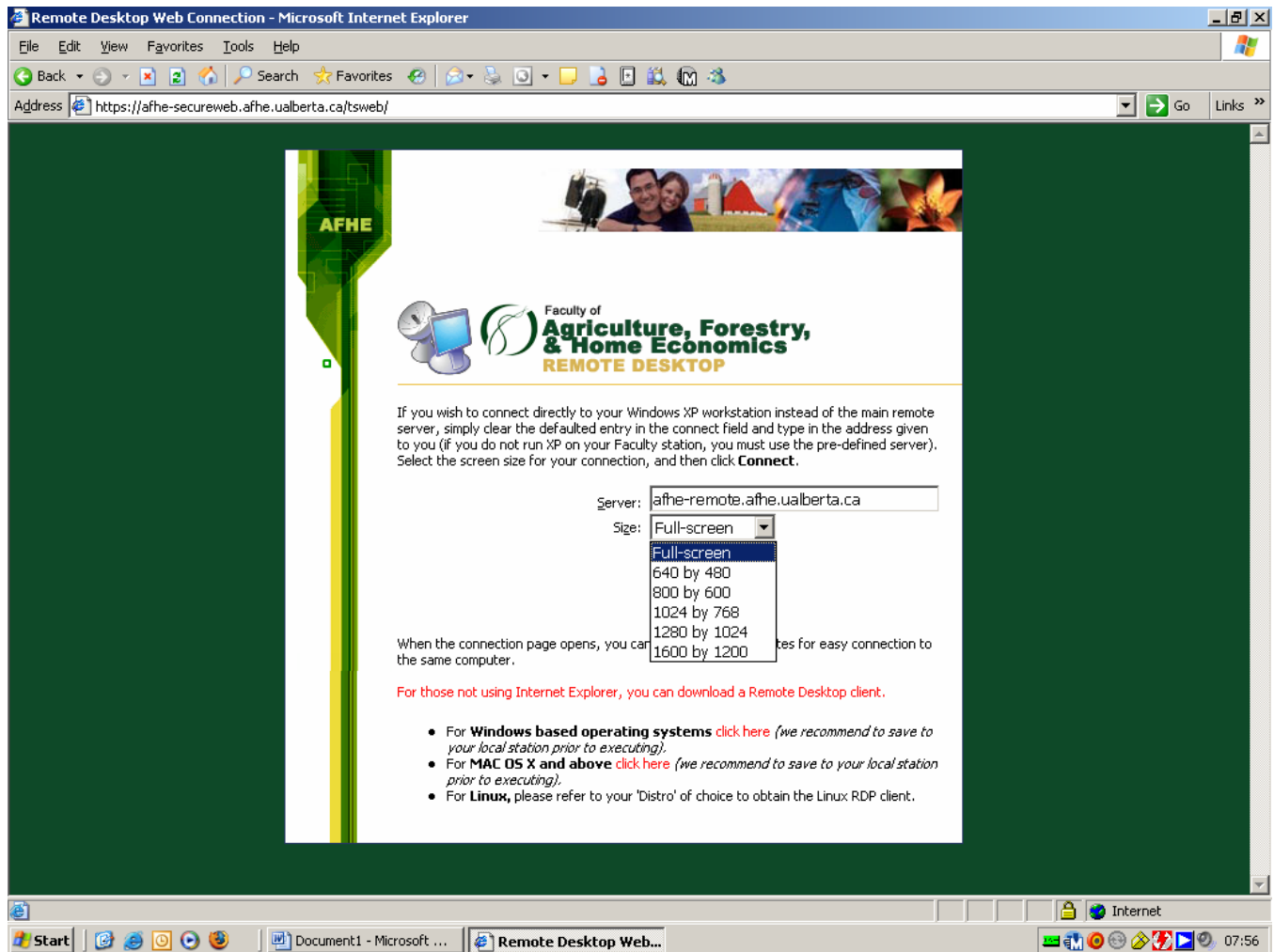
Notice the 'yellow alert bar' displayed just above the web page, prompting to install the 'ActiveX control'. Right click and select "Install ActiveX Control" (note: if you accidentally close the alert window, you may hit 'Refresh' on your browser tab to display it again).



Click on the 'Install button', depending on your internet connection, this download and install could take between 30 seconds to a few minutes if you are on a dial up modem.



Prior to hitting the 'Connect' button, depending on your screen size, you may wish to adjust the size of the prior to being connected, this is a personal preference. The 'Full Screen' option is the default value.



Click on the 'Connect' button, in a Full-screen view, a second web window will launch. If you use Windows XP Pro in your university located office, you can substitute the 'Server' address with the network IP address of your university located PC. Refer to the document link "Using Remote Desktop to access your personal office Computer (or Faculty Remote Server) via Remote Desktop client (PDF), located on the bottom of the 'Remote Access' web page to discover that address). The Faculty Server (afhe-remote) only has minimal software installed (MS Office 2003, Adobe Reader etc). This can facilitate basic file management requirements and allows you to utilize network resources and personal allotted storage space (i.e. 'P:' drive).

Remote Desktop Web Connection - Microsoft Internet Explorer

File Edit View Favorites Tools Help

Back Forward Stop Home Search Favorites Go Links

Address <https://afhe-secureweb.afhe.ualberta.ca/tsweb/>

AFHE

Faculty of **Agriculture, Forestry, & Home Economics**
REMOTE DESKTOP

If you wish to connect directly to your Windows XP workstation instead of the main remote server, simply clear the defaulted entry in the connect field and type in the address given to you (if you do not run XP on your Faculty station, you must use the pre-defined server). Select the screen size for your connection, and then click **Connect**.

Server:

Size:

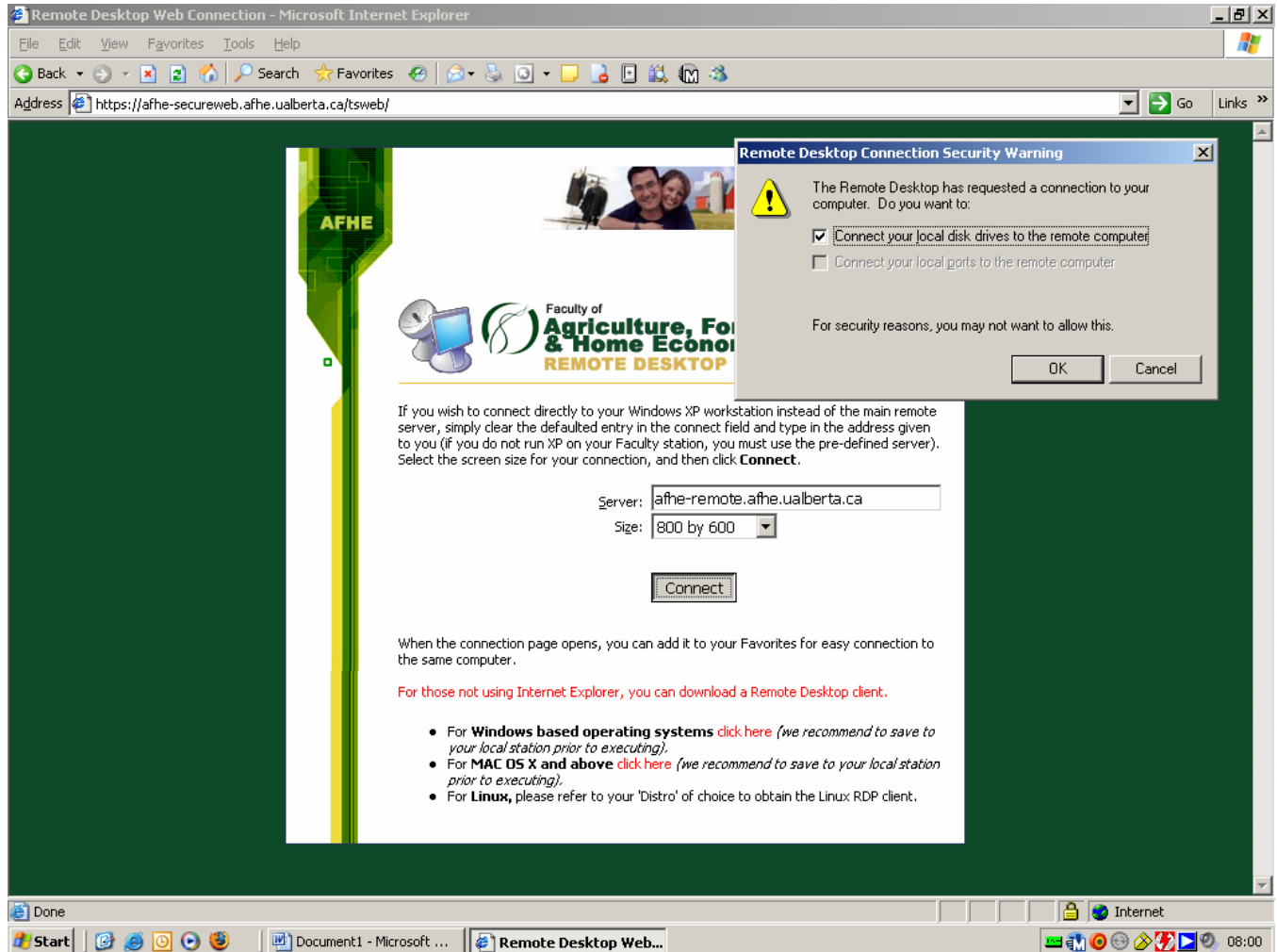
When the connection page opens, you can add it to your Favorites for easy connection to the same computer.

For those not using Internet Explorer, you can download a Remote Desktop client.

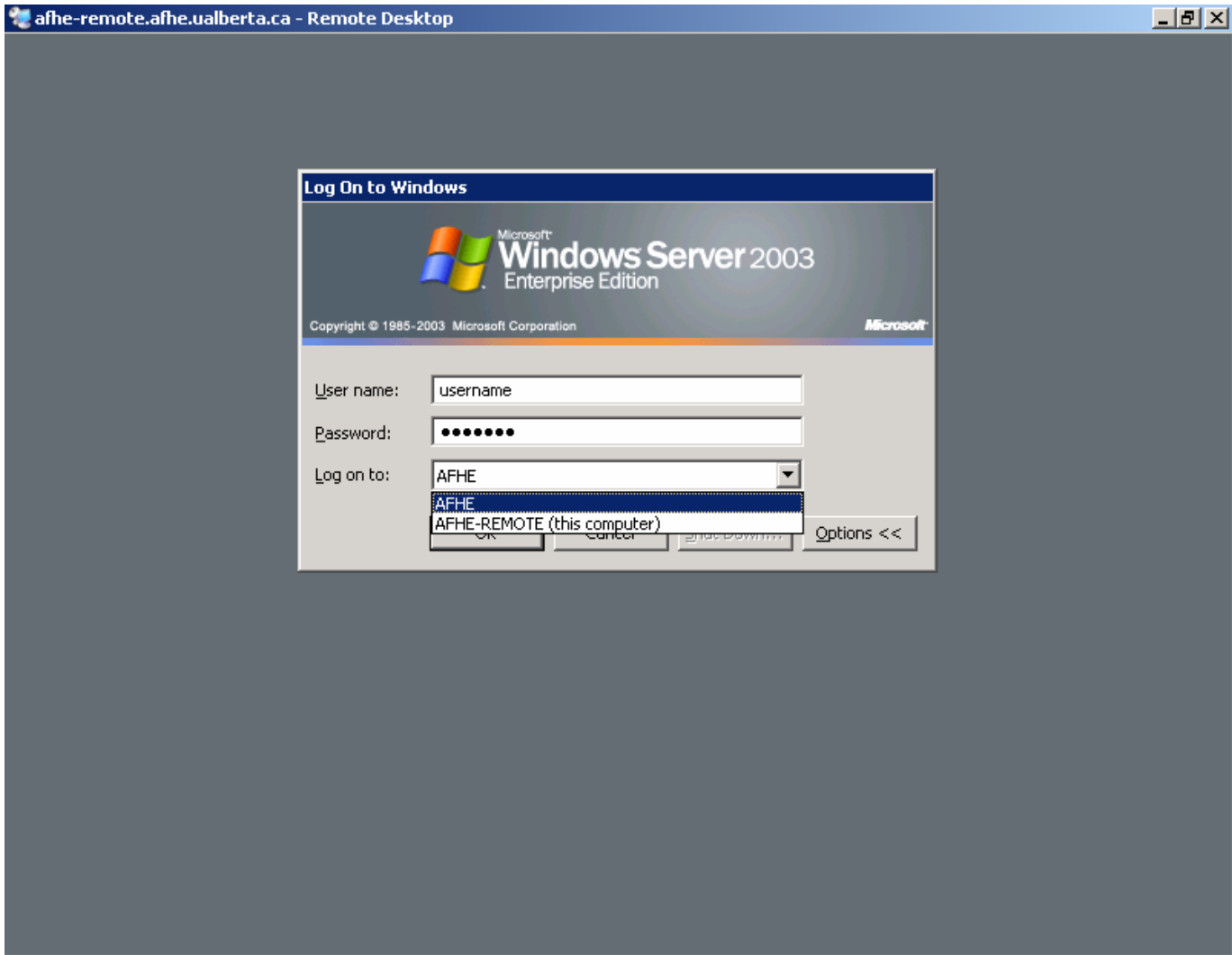
- For **Windows based operating systems** [click here](#) (we recommend to save to your local station prior to executing).
- For **MAC OS X and above** [click here](#) (we recommend to save to your local station prior to executing).
- For **Linux**, please refer to your 'Distro' of choice to obtain the Linux RDP client.

Start | Document1 - Microsoft ... | Remote Desktop Web... | Internet | 07:58

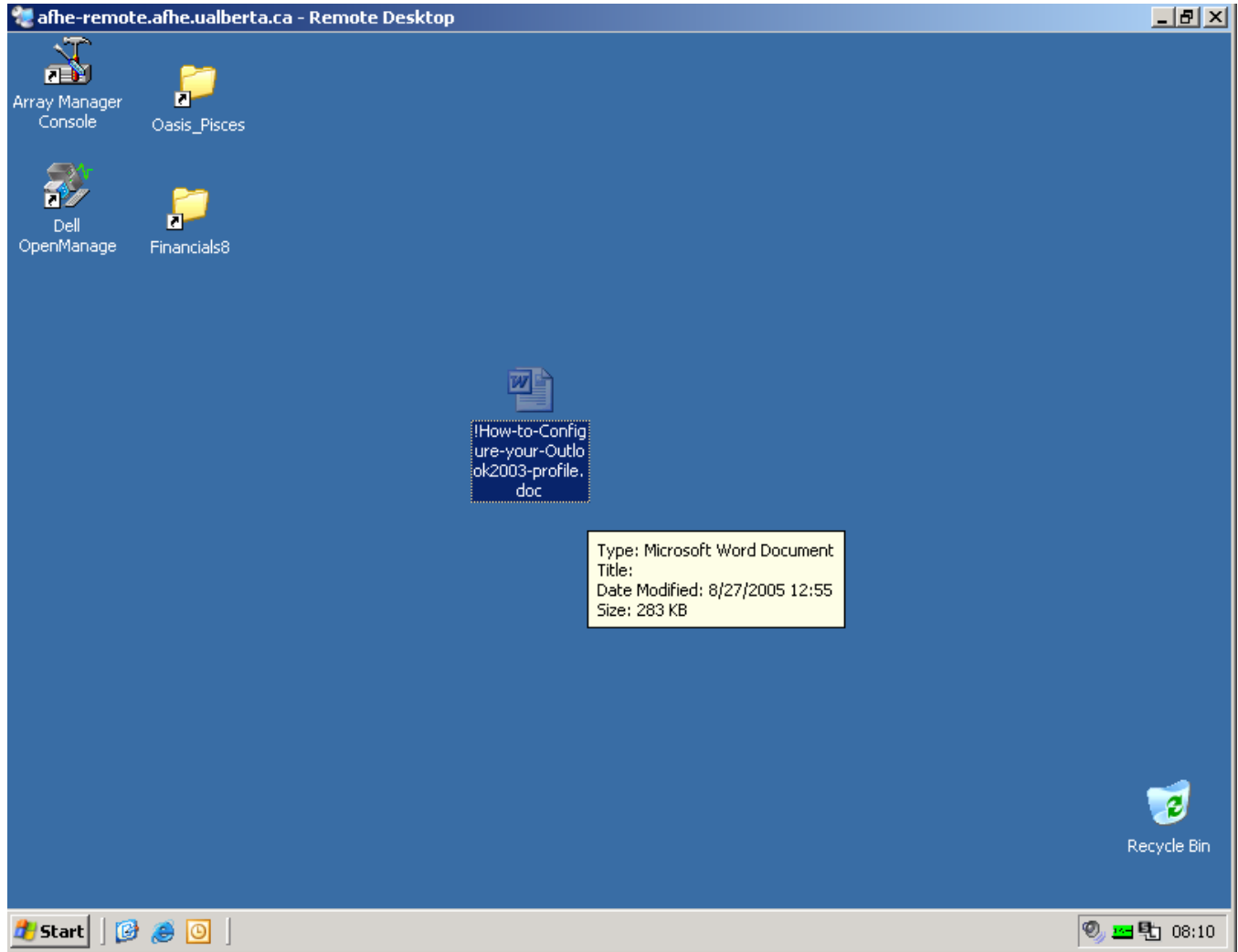
Once the 'Connect button has been pressed, you will be prompted to select the option to also connect your local station's disk drives for the session. This option is not recommended for those using a dial up modem (low speed) connection, or if you do not plan to copy files back and forth, it is not necessary to connect your local disk drives (note: while in a RDP session, you can not change this option, you would be required to log off and log back on to change this setting).



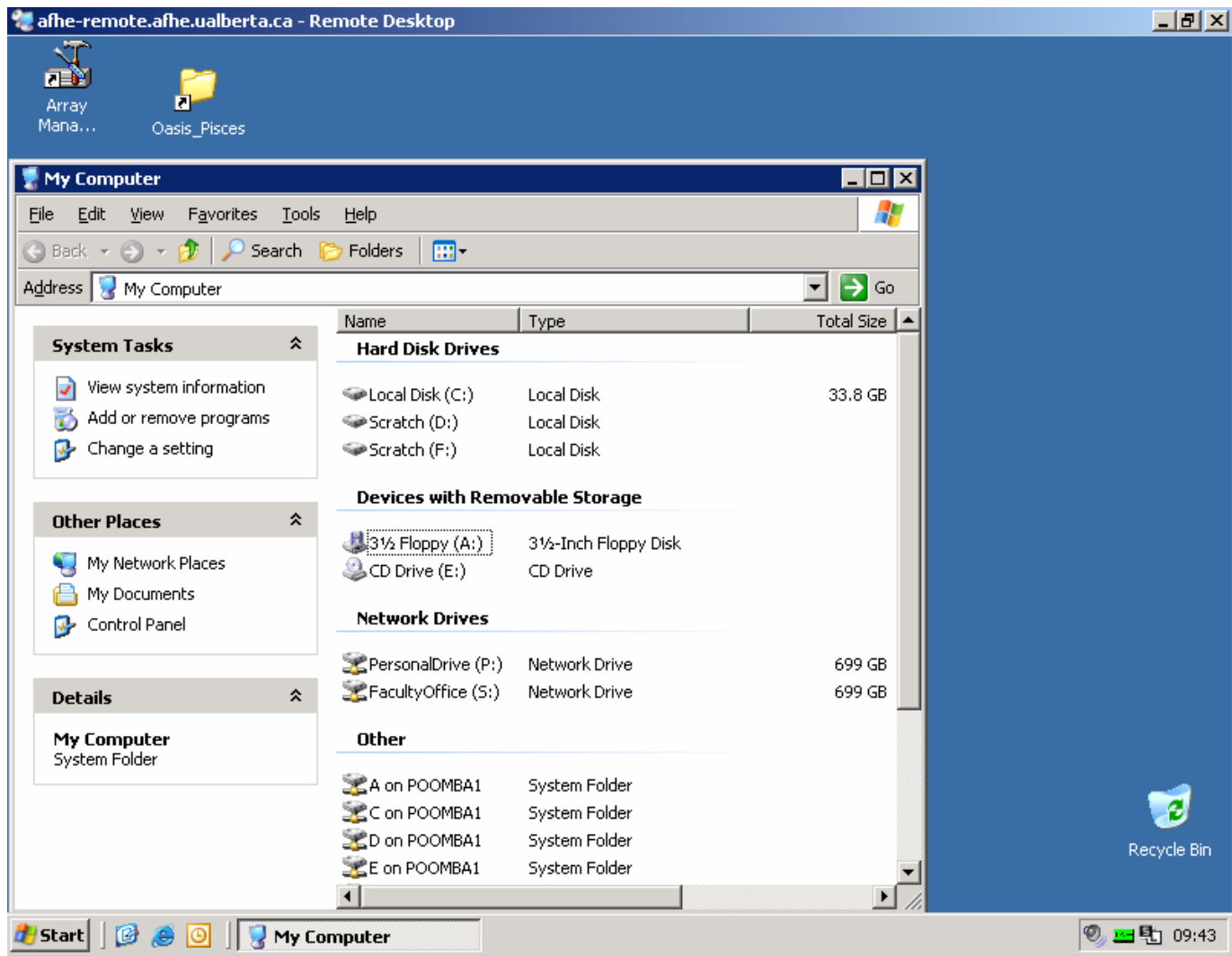
Once at the log on screen, enter in your username (userID), password and ensure you are logging into the AFHE domain. If the 'Log on to' window does not appear, click on the "Options <<" tab located on the logon screen to display.



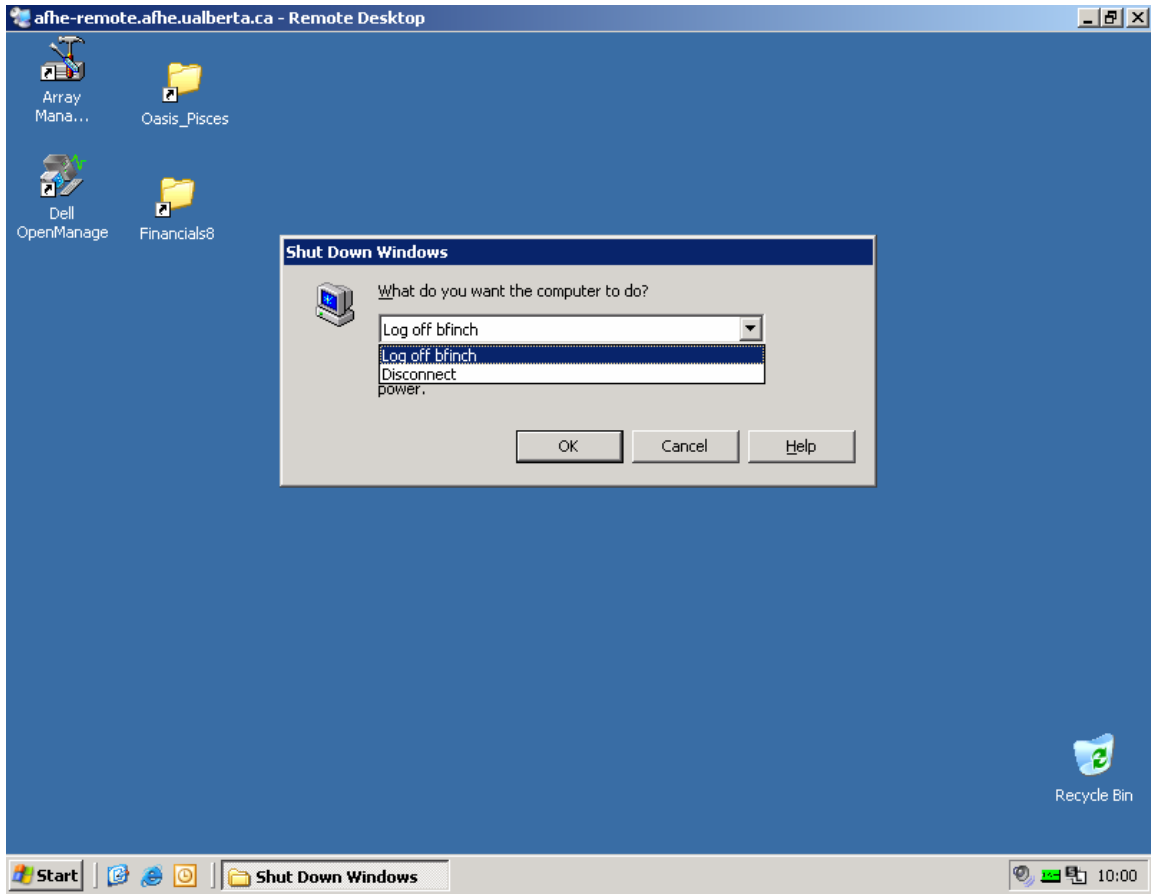
Once inside your RDP session, you will see a document called '!How-to-configure-your-Outlook2003'. The first time you use this RDP service on the server, you will need to follow this document to setup your Outlook 2003 client for use. If you connecting to your XP Pro workstation in the office, this step is not required.



Once inside your RDP session, you can open the 'My Computer' icon to confirm you have connected your local disk drives, they will be located in the 'Other' section, identified by the machine name you are currently using to connect. This will allow you to transfer files (copy / paste) between your Network drives (i.e. "P:" drive Personal storage) and your local system (note: the floppy drive refers to the server floppy drive, if you are trying to copy a file from a floppy disk, your machines floppy disk will be located in the 'Other' section).



Once you have completed your session, please ensure to select the 'Log off' option. This ensures your files in use will be closed and all CPU / memory resources allocated to your session will be released. This ensures maximum efficiency and speed as quite often there will many concurrent logins on the server at any given time.



Thank you.